



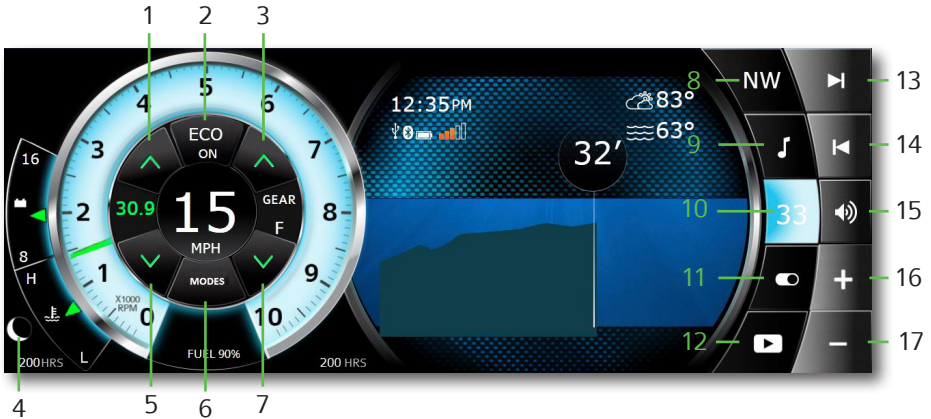
# USER GUIDE

# TABLE OF CONTENTS

Table of Contents	pg. 2
12.3" Display	pg. 3-4
Cruise Mode	pg. 5-6
Map Screen	pg. 6-13
Stereo Screen	pg. 14-17
Depth Screen	pg. 17
Settings Screen	pg. 18-24
Media Screen	pg. 24-27

## 12.3" DISPLAY

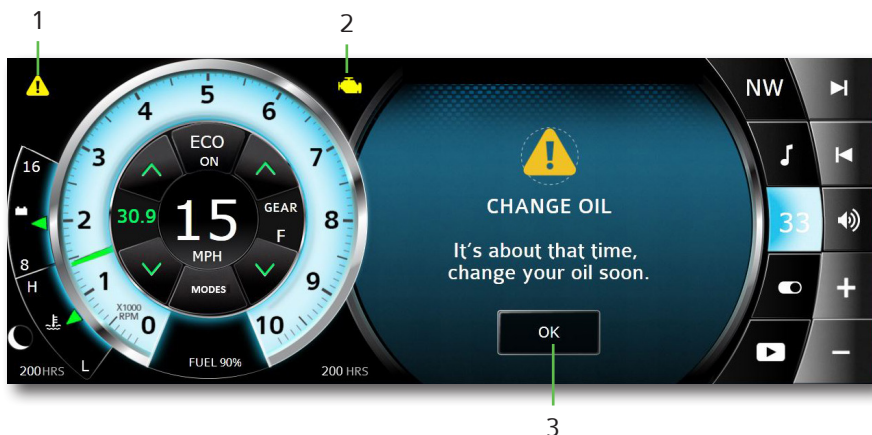
The high-resolution touch control displays bring more features to the surface providing an unmatched user experience. Critical information including engine performance, fuel level and depth is always in view or just a touch away. The center of each window screen swaps out with a touch of the top level destination page buttons.



- 1- Cruise Speed Increase
- 2- Cruise Mode On/Off
- 3- Neutral Offset Up
- 4- Night Mode Button
- 5- Cruise Speed Decrease
- 6- Mode Menu
- 7- Neutral Offset Down

- 8- Map Screen
- 9- Audio Screen
- 10- Depth Screen
- 11- Display Settings
- 12- Media Screen
- 13- Seek Next
- 14- Seek Previous
- 15- Mute On/Off
- 16- Volume Up
- 17- Volume Down

## ALERTS



1- Warning Triangle Icon / Button

2- MIL Indicator/Button (will present for 3 seconds when display powers up)

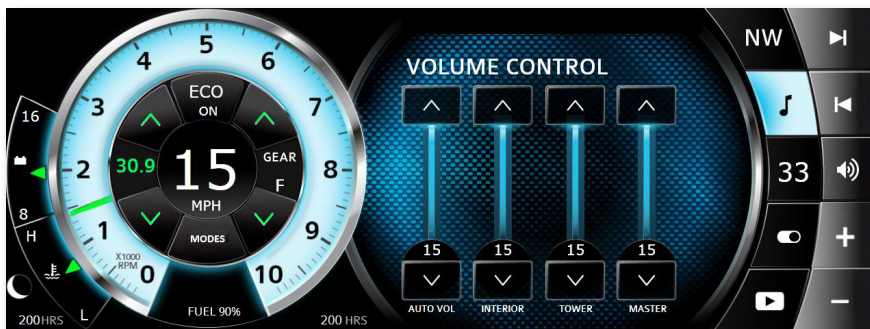
3- Acknowledgment Button

## NIGHT MODE

The **NIGHT** mode button toggles lighting brightness between NIGHT and DAYTIME. Adjust preferences in the SETUP MENU. The lighting of the Display dim to the value selected in the SETTINGS MENU.

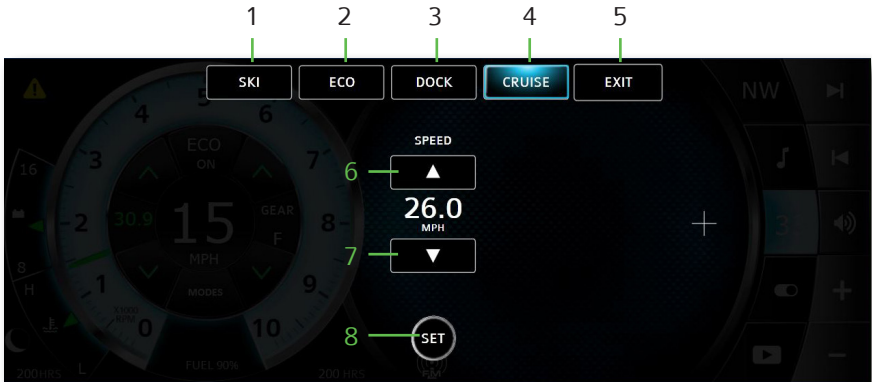
## VOLUME UP / DOWN

Touch **VOLUME UP** or **VOLUME DOWN** to bring up the VOLUME CONTROL MENU. Adjust the volume of the interior, tower and master speakers in the VOLUME CONTROL MENU.



## CRUISE MODE

Touch the **MODES** button to bring up the Speed Control Menu. Automatically maintain a consistent boat speed and launch acceleration. When **SPEED CONTROL** is **ON** and **ENGAGED**, the cruise control system will control the speed of the boat. Pulling the throttle to neutral will bring the engine to idle any time **CRUISE** is **ENGAGED**. Touch **SPEED UP** and **SPEED DOWN** arrows to adjust the cruise setpoint anytime speed control is **ON**.



- 1- Ski Mode
- 2- Eco Mode
- 3- Dock Mode
- 4- Cruise Mode

- 5- Exit Screen
- 6- Cruise Speed Increase
- 7- Cruise Speed Decrease
- 8- Cruise Speed Set

## SKI MODE

Touch **SKI** Mode button to control vessel speed and acceleration profiles. Pressing and holding a preset button will save the profile and set speed for easier configuration in the future. A short press of a preset will change the ski mode settings.

## ECO MODE

Touch **ECO** Mode button to optimize fuel efficiency while limiting engine torque.

## DOCK MODE

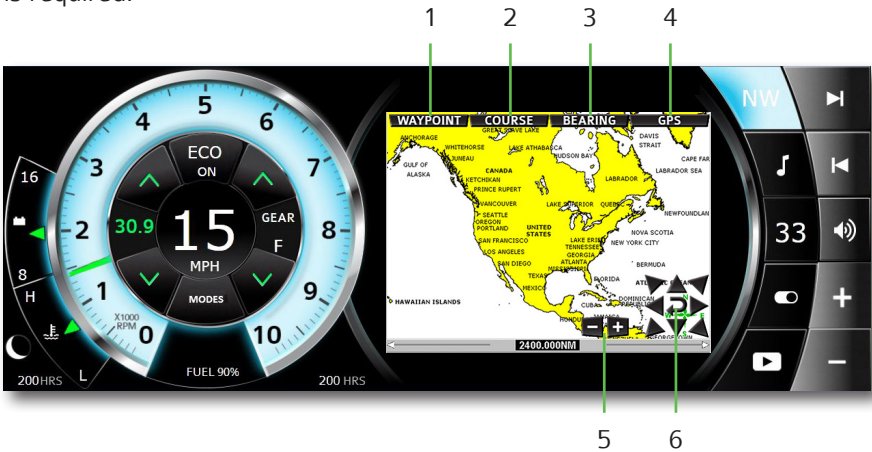
Touch **DOCK** Mode button to limit engine power to increased maneuverability while docking.

## CRUISE MODE

Touch **CRUISE** Mode to control vessel speed, but not acceleration.

## MAP SCREEN

Touch the **MAP** button to bring up navigation. The Navionics Navigation System uses GPS (Global Positioning System) satellites, and a map database to calculate and display route directions. SD Card with Map Data is required.



- 1- Waypoint Control
- 2- Course Control
- 3- Screen Orientation

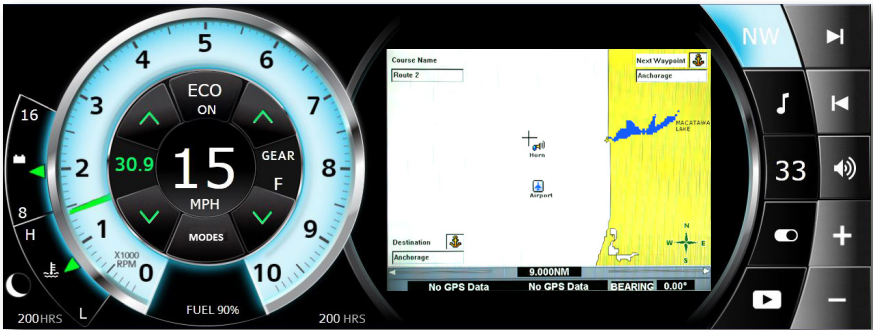
- 4- GPS Control
- 5- Zoom In/Out
- 6- Cursor Position Arrows (only in **BEARING MODE**)

## NAVIGATION CONTROLS

Touch **ANYWHERE** ON THE MAP to activate the pop up controls. Touch the **SIX DIRECTIONAL ARROW** buttons (while in **BEARING MODE**). On the map window to position the cursor. Touch the **RETURN** button to return the cursor to the **CURRENT LOCATION** and the **+/-** buttons to **ZOOM IN/OUT**.

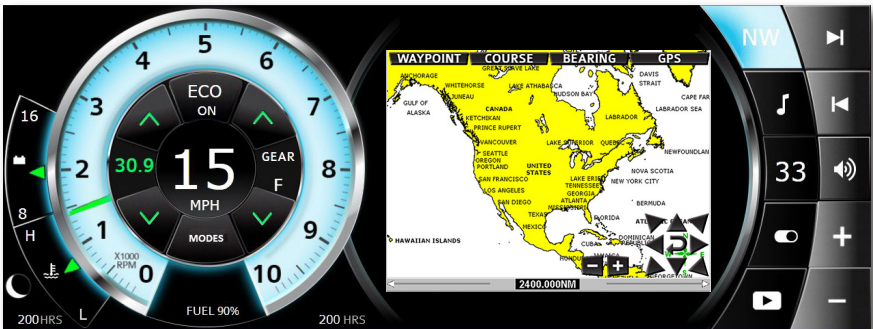
## WAYPOINT

Touch the **WAYPOINT** button to place a waypoint at the cursor position. Position the cursor over an existing waypoint to **EDIT**, **MOVE** or **DELETE** it. Choose a **WAYPOINT ICON** to mark the waypoint with a meaningful reminder.



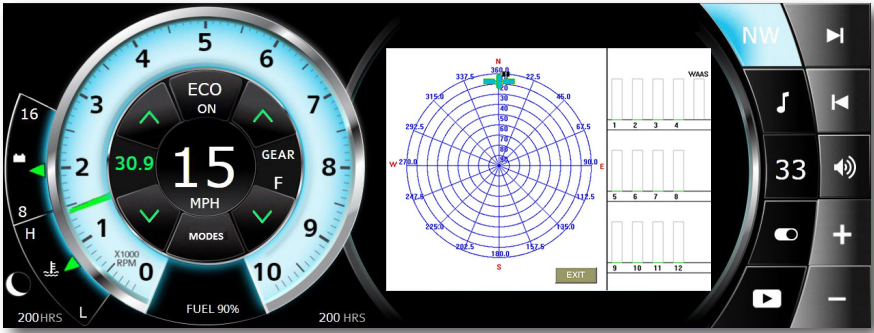
## BEARING

Touch the **NORTH / BEARING** button to change the method of **TRACKING** position. **NORTH** is always at the top when **NORTH** is selected. The **BEARING** is always pointing to the top of the screen and in the direction the boat is traveling when **BEARING** is selected.



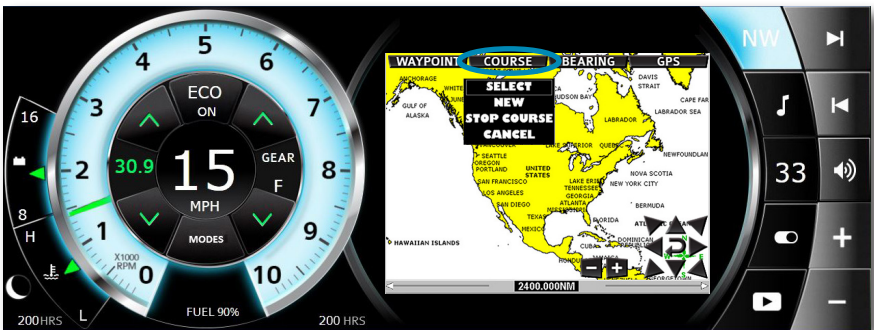
## GPS

Touch the **GPS** button to view available SATELLITE STATUS. IT CAN TAKE SEVERAL MINUTES FOR GPS SATELLITES TO LOCATE AND POSITION THE BOAT ON THE MAP.



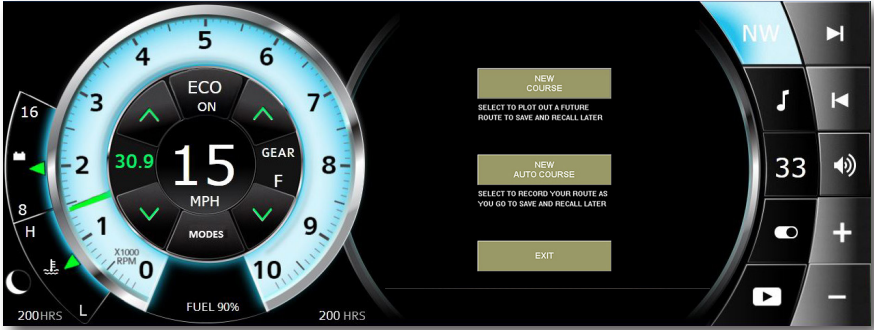
## COURSE

Touch the **COURSE** button to SELECT, CREATE, STOP or CANCEL a course.



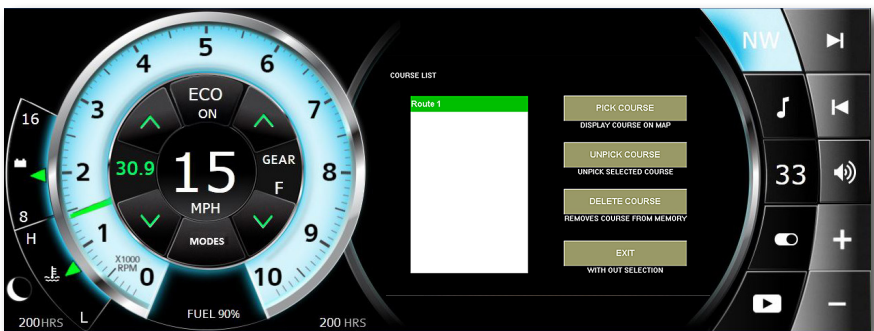
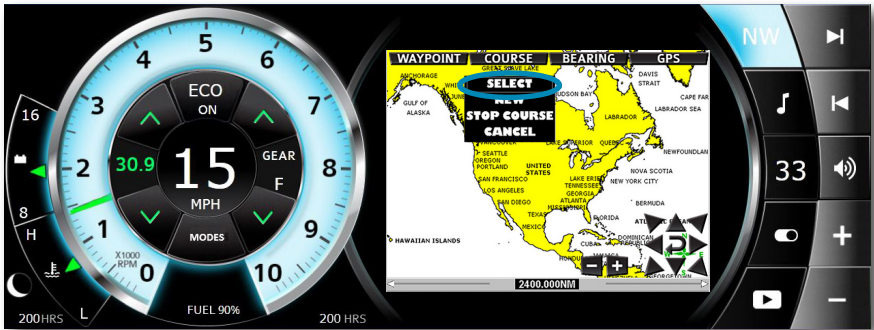


NEW AUTO COURSE records the actual route the boat is traveling to be saved and recalled later. NEW COURSE allows the user to build a future course of NEW user created waypoints.



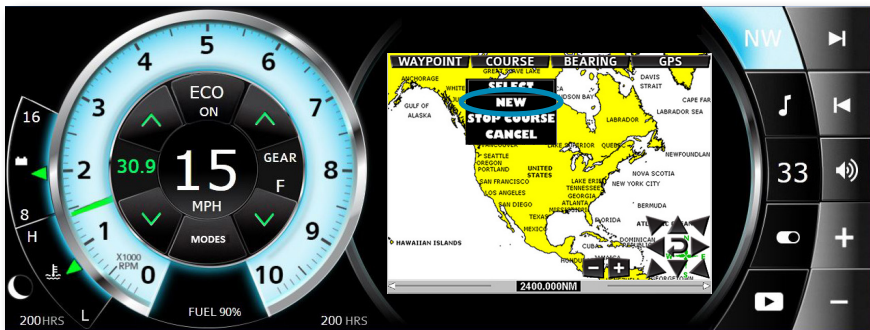
### SELECT COURSE

Touch the **COURSE** then **SELECT** button to PICK, UNPICK or DELETE a course. Picking a course will display the course on the map. Multiple courses can be displayed on the map.

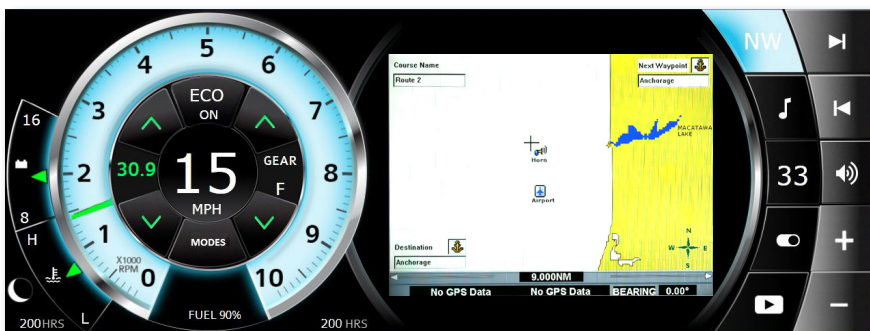


## NEW COURSE

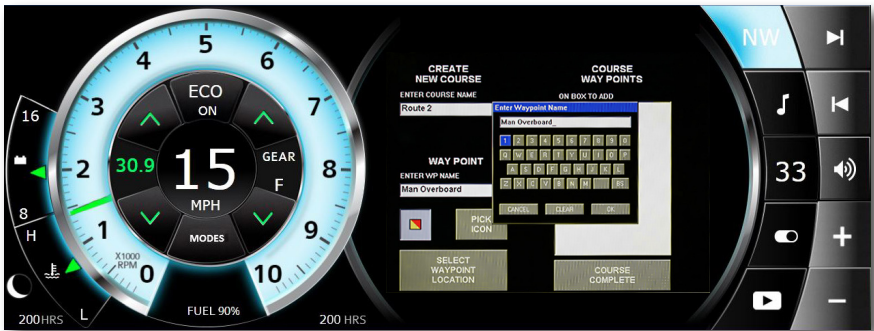
NEW COURSE allows the user to build a future course of NEW user created waypoints. To begin, touch **COURSE**, then **NEW**, and then **NEW COURSE**.



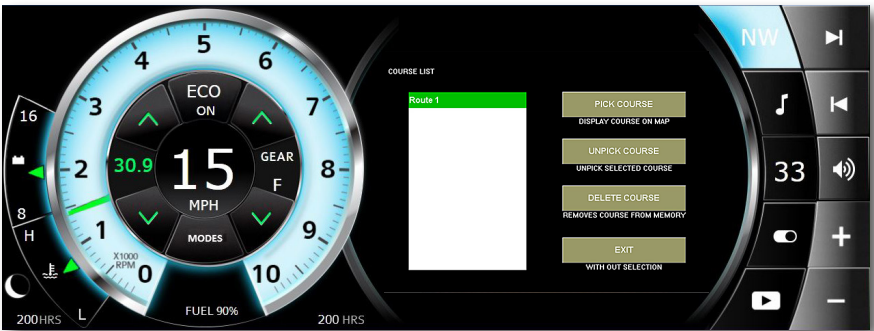
Touch **SELECT WAYPOINT LOCATION**, then position the cursor on the map for the first waypoint.



The last waypoint must be a **COURSE COMPLETE** waypoint to finalize the course. A course cannot be changed or edited once created.

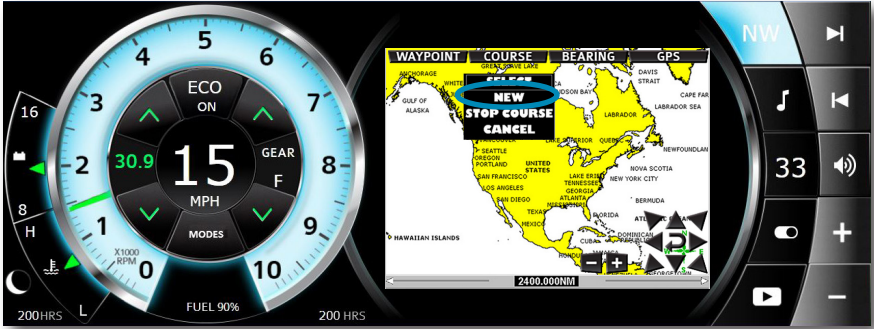


Touch the **COURSE** button, then the **SELECT** button to PICK, UNPICK or DELETE a course. Picking a course will display the course on the map. Multiple courses can be displayed on the map.

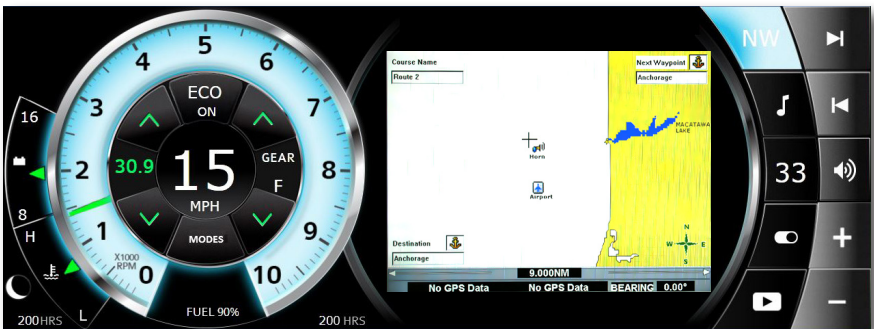


## NEW AUTO COURSE

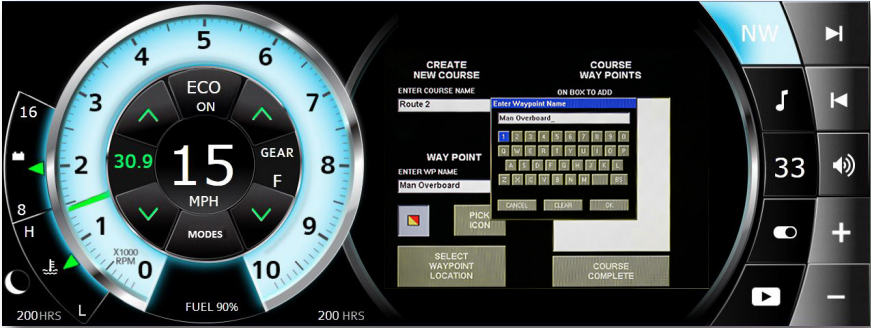
NEW AUTO COURSE records the actual route the boat is traveling to be saved and recalled later. To begin, touch **COURSE**, then **NEW**, and then **NEW AUTO COURSE**.



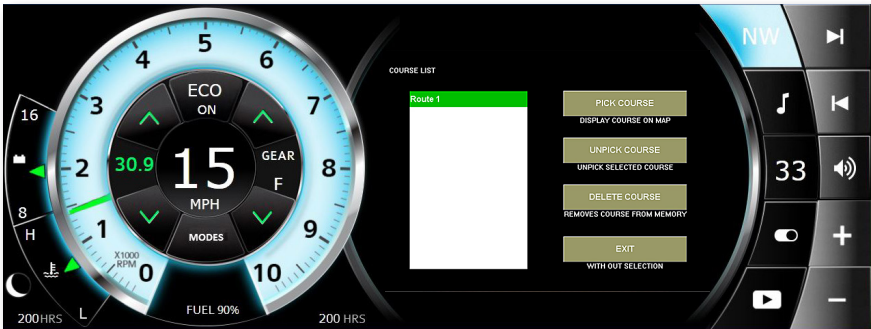
Touch **SELECT WAYPOINT LOCATION**, then position the cursor on the map for the first waypoint.



Touch the **WAYPOINT** button, then choose an icon and name for the waypoint. Continue with this same procedure to create all remaining waypoints. The last waypoint must be a **COURSE COMPLETE** waypoint to finalize the course. A course cannot be changed or edited once created.

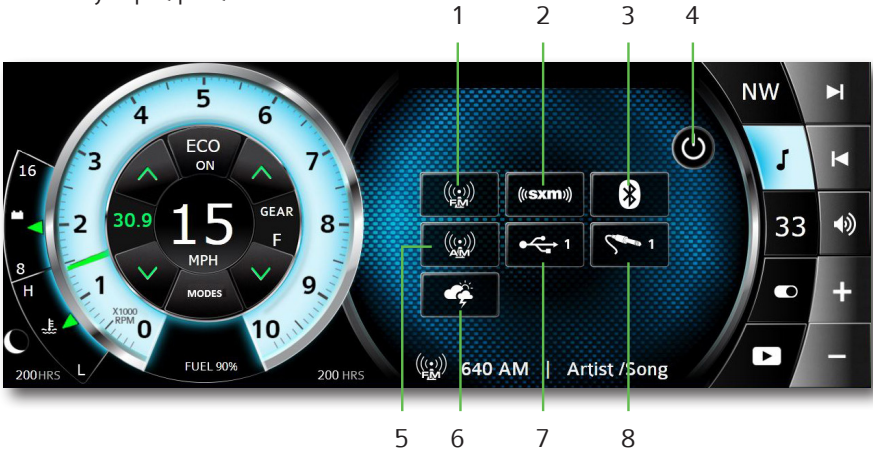


Touch the **COURSE** then **SELECT** button to **PICK**, **UNPICK** or **DELETE** a course. Picking a course will display the course on the map. Multiple courses can be displayed on the map.



## STEREO SCREEN

Touch the **STEREO** button for direct access to certain audio controls including AM/FM stereo channels, Bluetooth wireless, Satellite, USB and Auxiliary input ports.



1- FM Radio

2- Satellite Radio

3- Bluetooth

4- Power On/Off

5- AM Radio

6- Weather

7- USB Input

8- Auxiliary Input

## AM / FM RADIO / WEATHER

Touch **AM RADIO** or **FM RADIO** or **WEATHER** for AM/FM stereo channels / weather band.



## SATELLITE RADIO

Touch **SATELLITE** for satellite radio stations.



- 1- Source Select
- 2- Favorite's Scroll
- 3- Power On/Off
- 4- Direct Channel
- 5- Equalization Adjustment

- 6- Classic Audio Control
- 7- Save Settings
- 8- Lock Channel
- 9- Seek Forward / Back

## VIPER II BLUETOOTH

Touch **BLUETOOTH** to play songs on your phone or mobile device with Bluetooth wireless technology.



## USB INPUT

Touch **USB** to access USB input ports. Press **MENU** to view full navigation popup.



## AUXILIARY INPUT

Touch **AUXILIARY** to access the auxiliary input port.





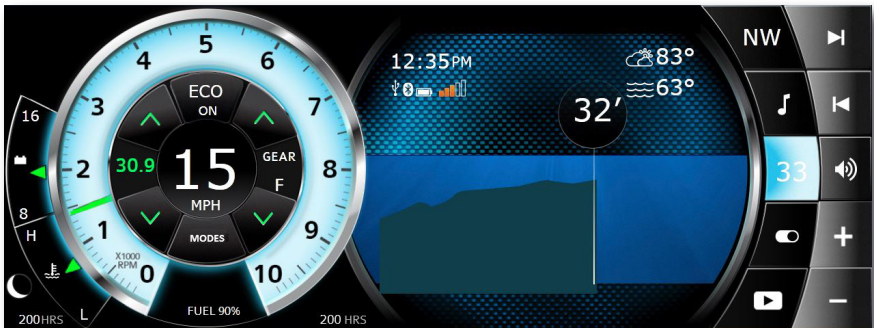
## EQUALIZATION / PRESET EQ

Touch **EQ** to adjust the loudness, bass, treble, fade, balance and sub of the music.



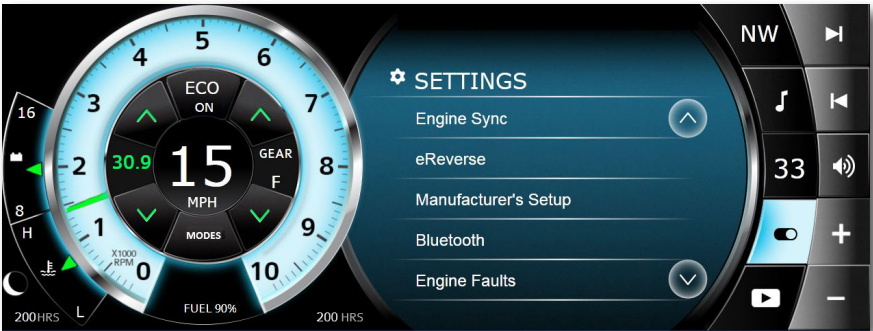
## DEPTH SCREEN

Touch the **DEPTH** button at the top of the screen to view a graphical representation of depth in addition to WATER, AIR TEMP, bluetooth information and clock. A SHALLOW WATER ALARM sounds and a NOTICE is displayed when the water depth is less than the shallow setting. The shallow water level is adjusted in the settings menu. English or Metric units are selected in the settings menu. The scrolling graph on the left provides a visual of depth history.



## SETTINGS SCREEN

Touch the **SETTINGS** button manage system settings, options, troubleshooting, and software updates here. View the available settings list with the **SCROLL BAR** on the right side of the screen and touch an item on list to **VIEW** available **SETTINGS CHOICES**. Changes will automatically be saved upon leaving the **SETTINGS** screen.



## ENGINE SYNC

Touch **ENGINE SYNC** to turn on and off engine syncing.



## eREVERSE

Touch **eREVERSE** to override the eReverse function for the engine. This is only used for servicing the drive pump assembly. Reference your engine manufacturer's literature for further instructions.



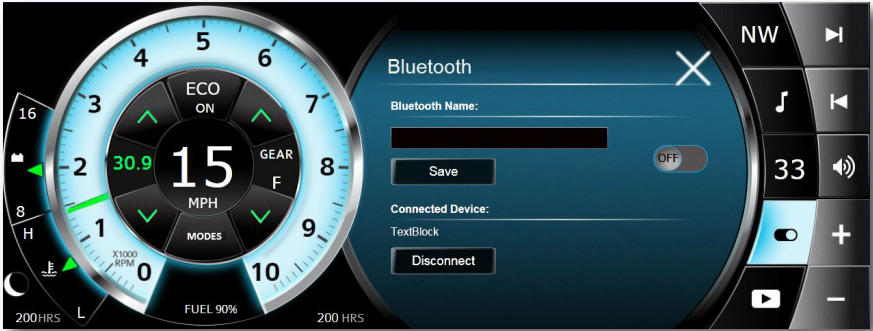
## MANUFACTURER'S SETUP

Touch **MANUFACTURER'S SETUP** to setup security exchange. This screen is password protected and is only accessible by a certified service technician.



## BLUETOOTH

Touch **BLUETOOTH** to control the on-board stereo and play songs on your phone or mobile device with Bluetooth wireless technology.



## ENGINE FAULTS

Touch **ENGINE FAULTS** view **ACTIVE** engine faults codes.



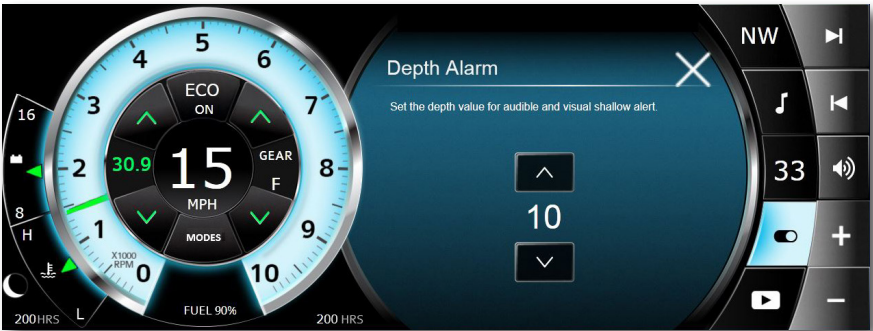
## BACKLIGHTING

Touch **ENGINE FAULTS** view **ACTIVE** engine faults codes.



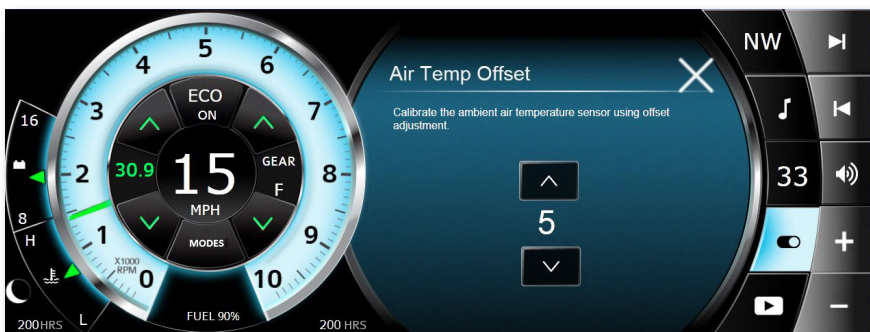
## DEPTH ALARM

Touch **DEPTH ALARM** to adjust the SHALLOW DEPTH ALARM setting. Setting to 0' will disable the alarm.



## AIR TEMP OFFSET

Touch **AIR TEMP OFFSET** to calibrate the ambient air temperature sensor offset.



## UNITS

Touch **UNITS** to choose from ENGLISH to METRIC units.



## TIME ZONE SETTINGS

Touch **TIME ZONE SETTINGS** to select time zone.



## SYSTEM DIAGNOSTICS

Touch **SYSTEM DIAGNOSTICS** to be provided troubleshooting information by a trained technician.



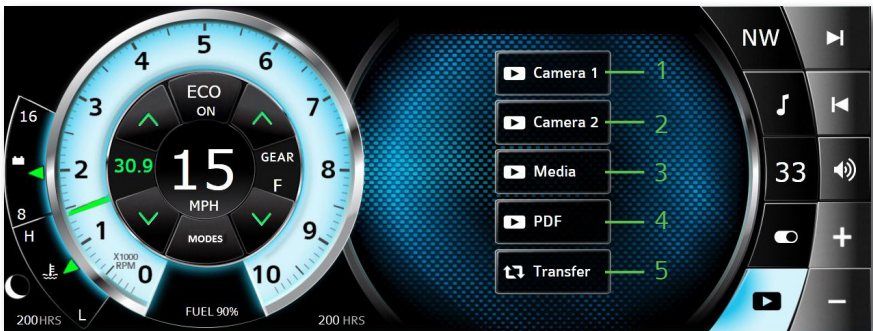
## ABOUT

Touch **ABOUT (UPDATE)** to view the installed software version and instructions for how to install a software update here. During the update process ensure stable power to the display and do not interrupt the process. After pressing "Update" wait for up to 30 seconds and the counter will show update progress. After progress reaches 100%, reboot system.



## MEDIA SCREEN

View a PDF document or video from an SD card or USB. This feature functions **ONLY** when the engine is OFF



- 1- Camera #1
- 2- Camera #2
- 3- Media Player

- 4- PDF Viewer
- 5- File Transfer



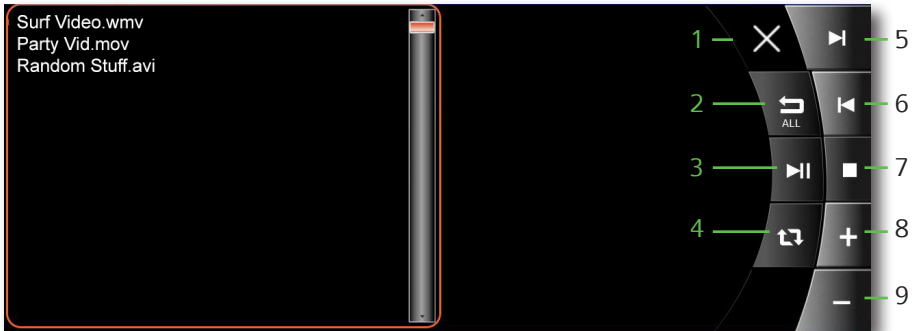
## CAMERA 1 & 2

Video Input buttons will display video feed from the analog video inputs into the display. There is no recording or audio capability to these inputs.



## MEDIA VIEWER

The **MEDIA** button will allow the user to and play videos that have been stored on the SD card in the SeaRay folder. Touch the name of the desired file to play.



1- Exit Player

2- Play All Videos

3- Play/Pause Video

4- Repeat Video

5- Next Video

6- Last Video

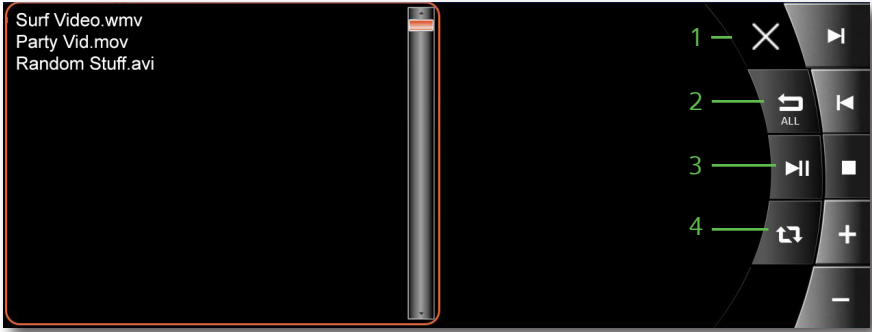
7- Stop Video

8- Volume Up

9- Repeat Video

## PDF VIEWER

The **PDF** button will allow the user to view pdfs that have been stored on the SD card in the SeaRay folder. Touch the name of the desired file to open the file.



1- Exit Viewer

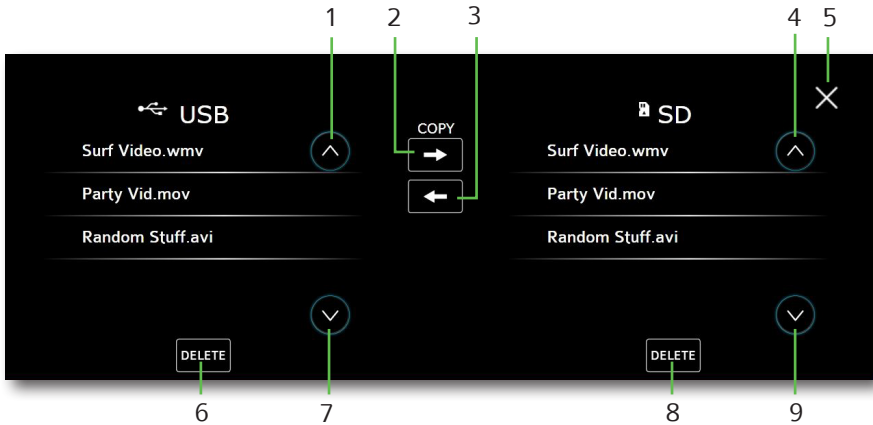
2- Next PDF

3- Last PDF

4- Stop Viewing

## FILE TRANSFER

Move Files from USB input device to SD Card. Highlight file to be deleted or copied. USB 1 input is located in the starboard side helm storage. The optional USB 2 (if installed) will be located in the glove box. Wait sufficient time for larger files to transfer.



- 1- Scroll Up
- 2- Copy to SD
- 3- Copy to USB
- 4- Scroll Up
- 5- Exit

- 6- Delete Selected File
- 7- Scroll Down
- 8- Delete Selected File
- 9- Scroll Down

